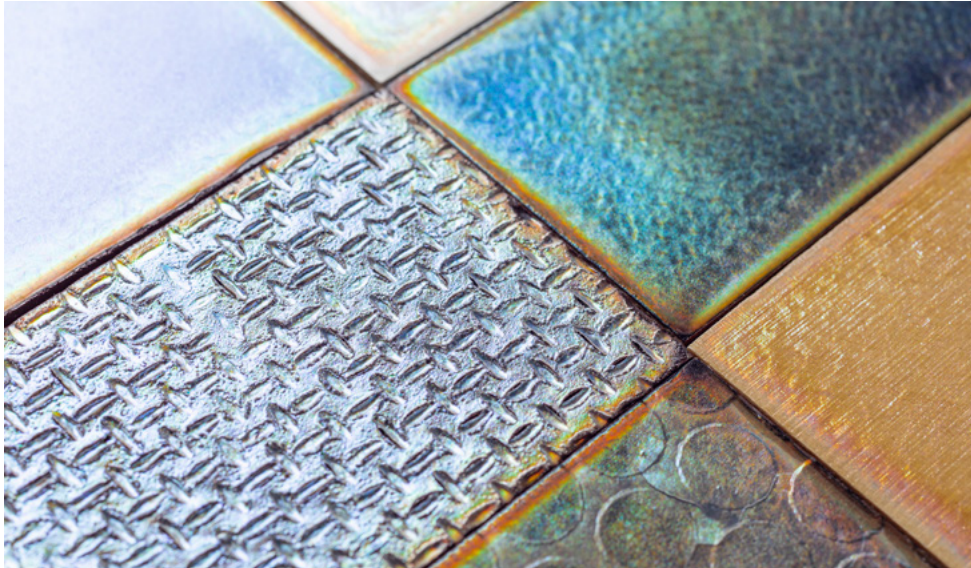




WOOD-BASED EM&Ts (by AALTO)

CHEMICALLY OR
MECHANICALLY PROCESSED
MATERIALS FROM PLANTS



Sustainable Structural Colour.



KAARNI - Biodegradable plate made out of bark.



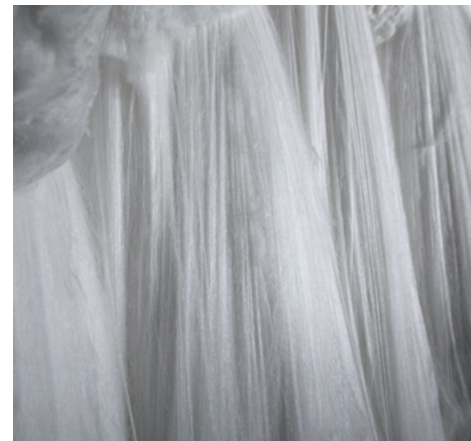
The CHEMARTS
Cookbook -
recipes for wood-
based material
experimentations.



FibDex - Nature's protective barrier.



Walki® Agripap is made from kraft paper that is coated with a biodegradable layer, which slows down the degradation of the paper.



Spinnova - New technology to produce cellulose-based textile fibres.



Cellulose foam.